



environmental
services
association



Collecting waste safely

9 November, London

10.00 am – 03.00 pm

Safe waste and recycling collection services

Chantal Nicholls
HM Principal Inspector
HSE, Manufacturing Sector
(Waste Management and Recycling)

Outline of talk

- Review industry health and safety performance
 - Overview of HSE's strategy and programme of work with the industry.
 - **WS2 - Safe waste and recycling collection services good practice guidance**
 - WS4 – Influencing LAs (including Risk Comparator Tool and Ill-health metrics research)
-

The Industry

Nature of the industry

- Rapid industry change
 - 12% growth in employment 2005/6 to 2007/8 (2 years)
 - Nearly 200,000 workers in 2007/8
- Targets - Landfill diversion and Increased recycling
- Changing processes/facilities
 - Use of wheelie bins/boxes
 - Multiple streams – organic, kitchen, recyclables, residual
 - Source segregation v co-mingled and MeRF segregation
 - Energy from waste
 - Biological treatment
 - Frequency of collections
- Public interface and impact
- Political hot potato at local, regional and national levels
- Public and private sector
- Poor health and safety performance



Health and Safety Performance - 1

Using data from:

- Bomel 1 - RR240: Mapping health and safety standards in the UK waste industry
<http://www.hse.gov.uk/research/rrhtm/rr240.htm>
- Bomel 2 – **Research Report RR701: Update to mapping health and safety standards in the UK Waste Industry**
<http://www.hse.gov.uk/research/rrhtm/rr701.htm>
- HSE CSAG

To get some indication of performance up to 2007/8

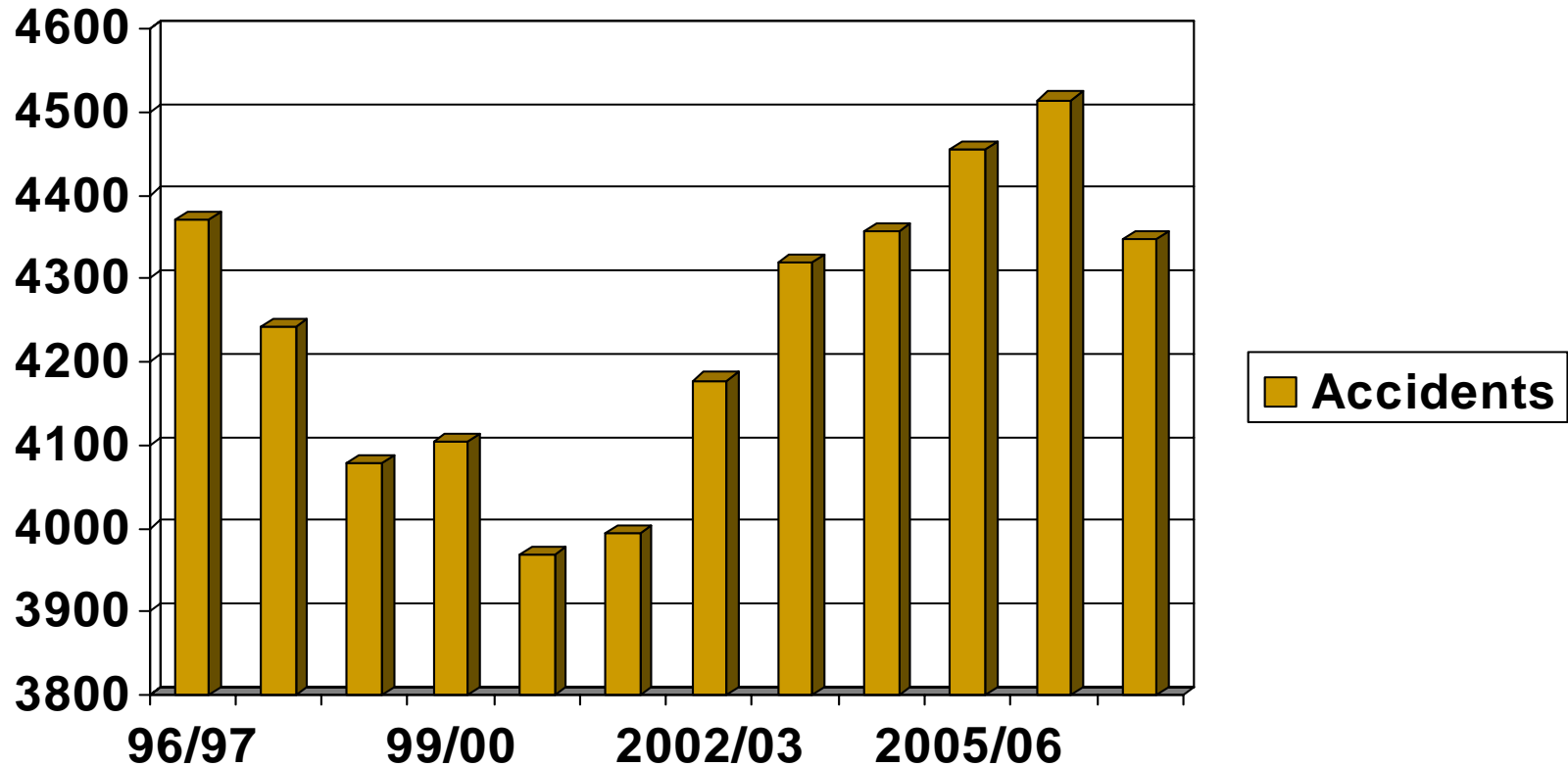
Press release:

<http://www.hse.gov.uk/press/2009/e09027.htm>

Health and Safety Performance – 2

Year	Bomel 1	Bomel 2	CSAG
1996/97	4371	4371	4371
1997/98	4267	4242	4242
1998/99	4106	4078	4078
1999/00	4136	4103	4104
2000/01	3989	3969	3969
2001/02	3751	3993	3994
2002/03		4176	4178
2003/04		4317	4319
2004/05		4357	4357
2005/06		4456	4456
2006/07			4515
2007/08			4347

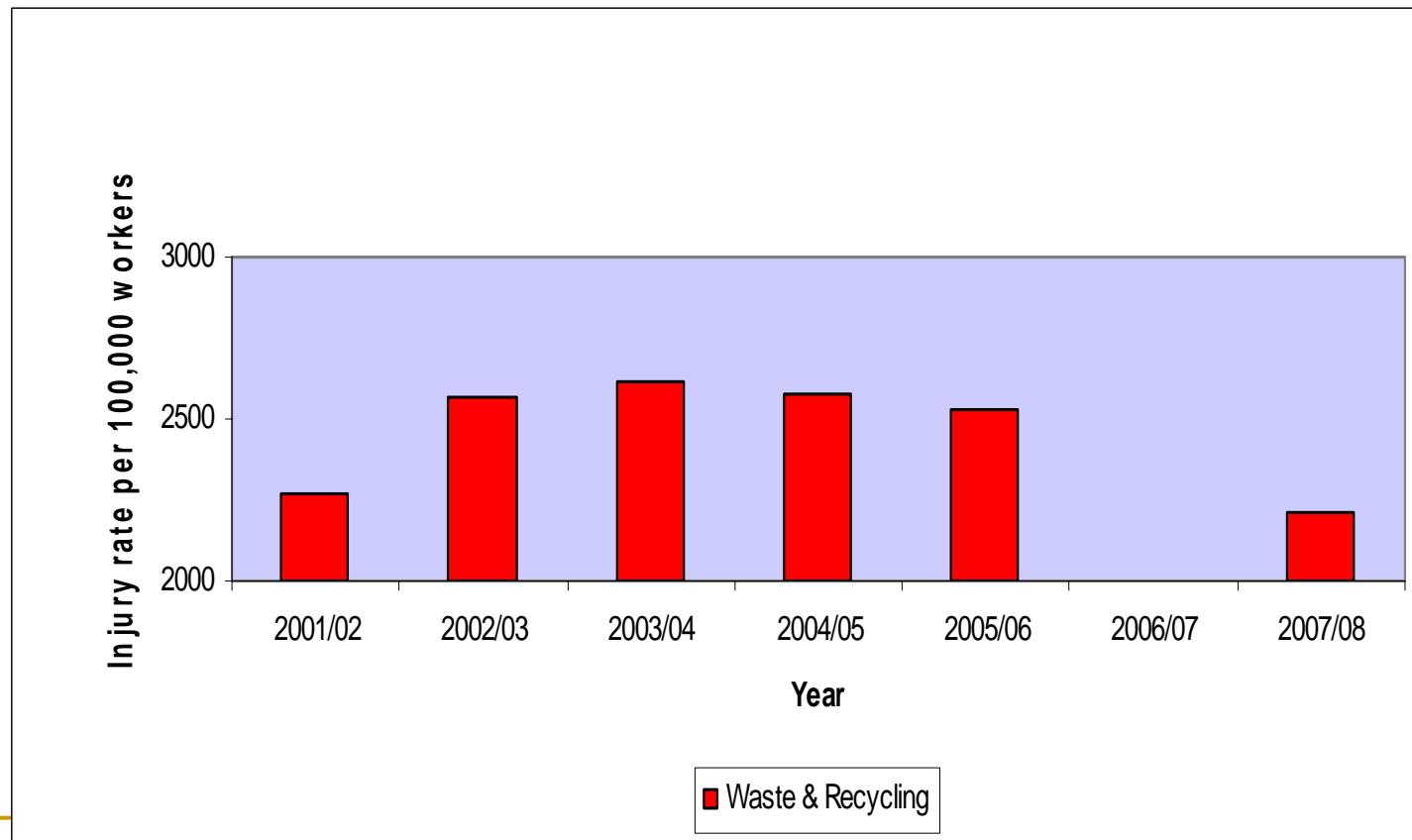
Health and Safety Performance - 3



Health and Safety Performance - 4

Year	Waste and Recycling		
	Total Injuries	Calculated employment	Injury rate per 100000 workers
2001/02	3993	176309	2265
2002/03	4176	162556	2569
2003/04	4317	165140	2614
2004/05	4357	169077	2577
2005/06	4456	176452	2525
2006/07	4515	Not calculated	
2007/08	4347	196920	2207

Health and Safety Performance - 5



Health and Safety Performance - 6

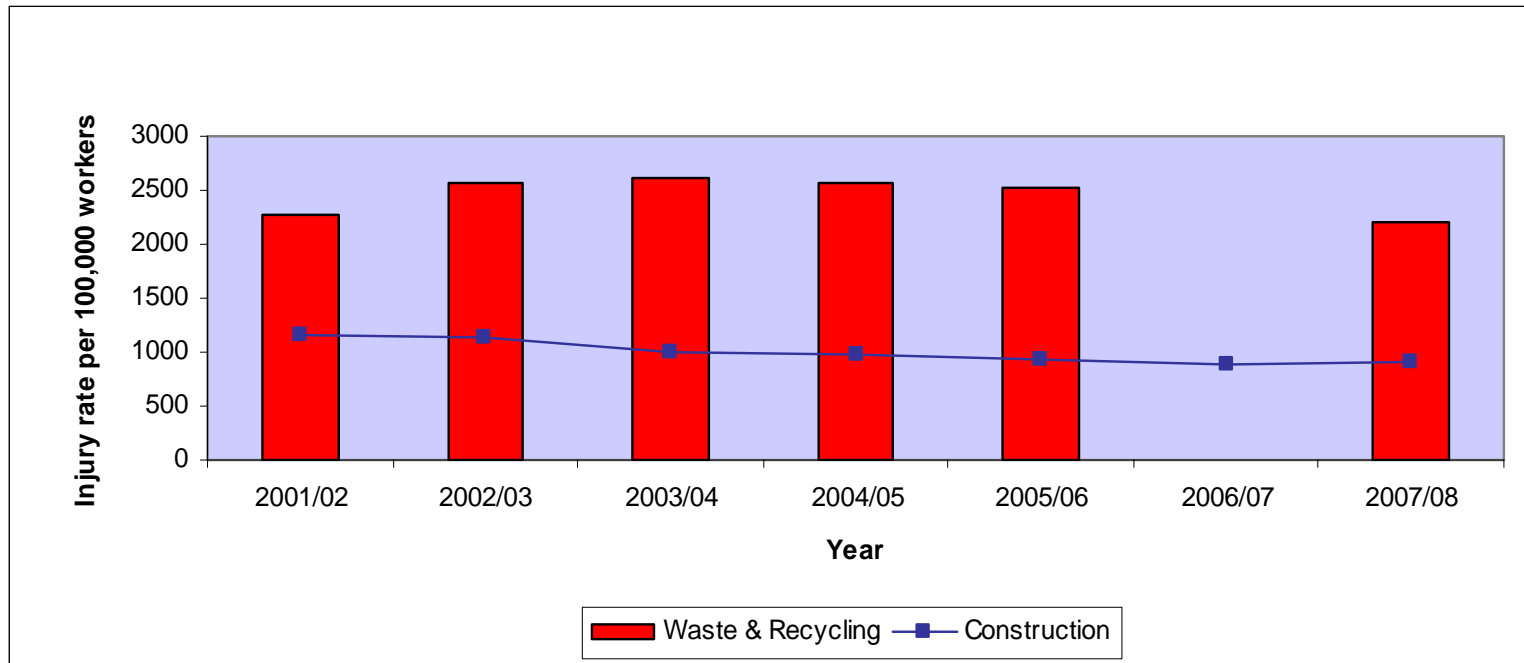
Good news

- Between 2003/4 and 2007/8 injury rate for workers has decreased by approximately 15% = 800 fewer injuries p.a.

Bad news

- All injury rate for workers is over 4 x the “all industries” average rate
 - Also more than x2 injury rates for workers for manufacturing and construction industries.
 - The “fatal and major” injury rate for workers combined is 50% higher than the construction industry rate
-

Health and Safety Performance - 7



Health and Safety Performance - 8

Fatalities

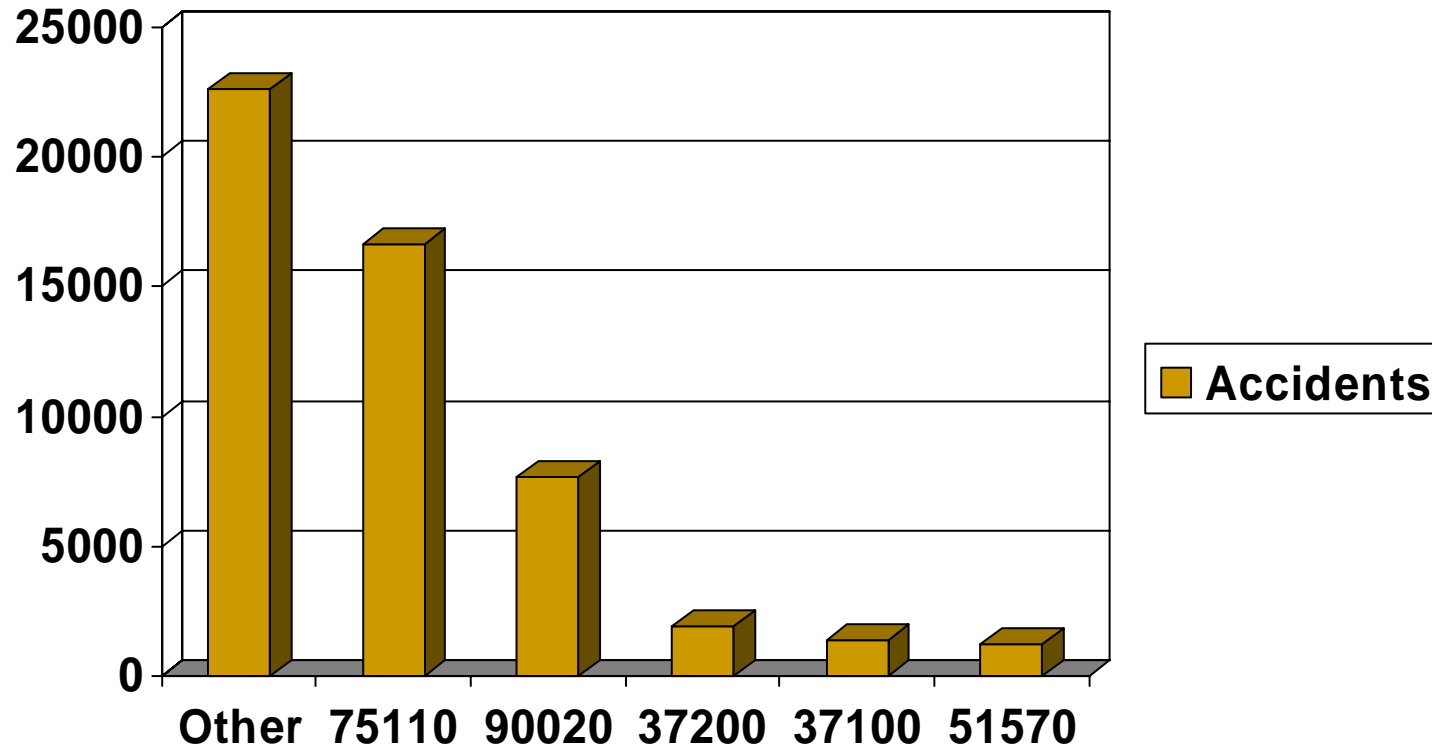
- The fatal rate x2 that of construction, 6x all manufacturing industries and x9 “all industries” rate
- Only agriculture is worse at x10 “all industries” rate

Year	Workers	MOPs	Total	Fatal rate for workers
2001/02	16	3	19	9.07
2002/03	13	4	17	7.99
2003/04	7	3	10	4.24
2004/05	13	1	14	7.69
2005/06	15	4	19	8.5
2006/07	16	3	19	8.57
2007/08	13	3	16	6.6
2008/09p	14	2	16	7.1
Total	107	23	130	

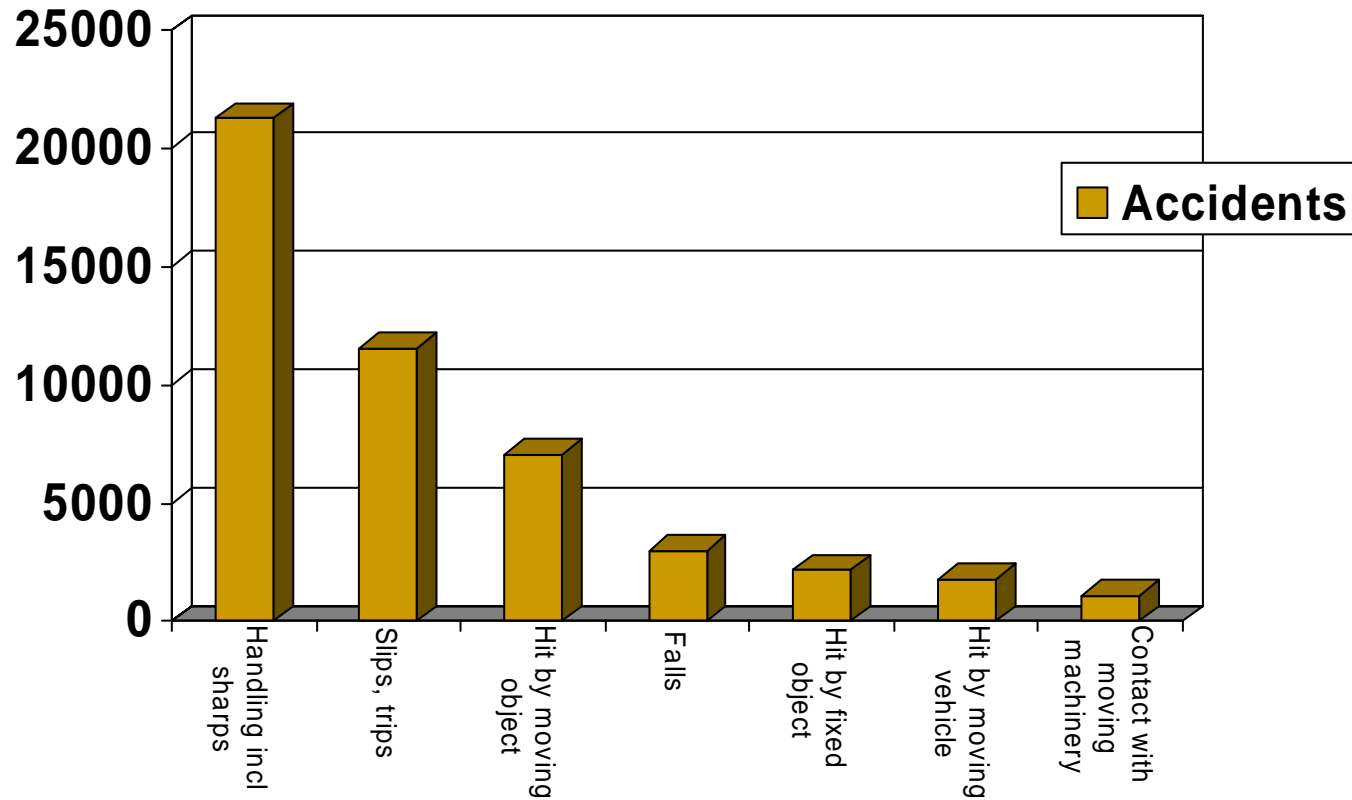
Health and Safety Performance - 9



Health and safety performance - 10



Health and safety performance - 11



Health and safety performance - 12

Major causes of accidents

- Handling (MSDs 33%, lacerations/sharps 9%) = 42%
 - MSDs: Handling large and awkward objects
 - Sharps – punctures and stabbings, hypodermic needles, sorting
- Slips, trips and falls = 29% (falls 6%)
 - Vehicle access, egress, street environments, picking platforms, fixed plant maintenance (MeRFs)
- Struck by = 18%
- Workplace transport = 4%
 - Working with vehicle (collection/sorting), in traffic, vicinity of public



Vast majority – 80% in collection, sorting and disposing activities

Health and safety performance - 13

Ill-health

- MSDs (see injuries)
 - Cumulative
 - Biohazards
 - Body fluids
 - Bio-aerosols: composting, green collection, kitchen waste, nappies
 - Noise
 - glass collections
 - MeRFs
 - Process emissions
 - Stress
-

HSE strategy & work with industry - 1

- First phase – 3 years (2005/6 to 2007/8)
 - 2008/9
 - Second phase – 4 years (2009/10 to 2012/13)
 - There is a role for everyone and everyone must play their part
 - Focus on collection services and major hazards
 - Numerous work streams including:
 - Engagement with and support for WISH (WS1)
 - WISH good practice generation (WS2)
 - Stakeholder support (WS3)
 - Influencing LAs – health and safety in managing delivery of waste services (WS4)
 - Inspection of “hot spots” (WS5)
-

HSE strategy & work with industry - 2

- Work streams continued:
 - Lead Inspector Initiatives with national waste management companies (WS6)
 - Support to field operational inspectors (WS7)
 - Trade exhibitions (WS8)
 - Statistics (WS9)
 - Communications (WS10)
 - Ill-health (WS11)
 - Landfill gas (WS12)
 - Live and topical issues (WS13)
-

Safe Collection Guidance - 1

- <http://www.hse.gov.uk/pubns/waste23.pdf>



Safe Collection Guidance - 2

- Joint WISH and HSE good practice guidance i.e. industry setting its own benchmarks & standards
 - The guidance does not create any new requirements:
 - e.g. risk assessment (including specific route assessment)
 - e.g. presumption in favour of single sided collection over double sided unless justified (e.g. GN PM52)
 - e.g. use of reversing assistants came in 2006 in WISH guidance note (Waste04)
-

Safe Collection Guidance - 3

Clients and contractors share a duty to reduce the risk.
(HSWA s2 & s3)

Risk control measures can be applied at several key stages of the collection service:

- Designing the collection service
- Identifying safe systems of work; and
- Managing the risk

NB: Supervision and Monitoring

Safe Collection Guidance - 4

Collection services may be operated 'in-house' in which case the responsibility falls entirely on the local authority.

- They should consider providing for health, safety and welfare of collection crews and others at initial stage of designing the collection service.
 - They will need to prepare safe systems of work alongside the development of arrangements for managing the risk including regular review of those arrangements.
-

Safe Collection Guidance - 5

Where services are contracted out, safety is a shared responsibility – a partnership designed to reduce the risk of injury to all who may be affected.

- Local authorities cannot ‘contract out’ their accidents (i.e. their H&S responsibilities).
 - Key stages of the contract/design of service:
 - The design and pre-tender process - specification
 - Assessing the tender
 - Award of contract
-

Safe Collection Guidance - 6

Risk assessment as it applies to collection services

- Not new concept
 - Not onerous
 - Follow the 5 steps to risk assessment:
 - Identify the hazards
 - Decide who may be harmed and how
 - Evaluate the risks and decide on control measures
 - Record significant findings, implement the controls
 - Review/update the assessment.
-

Safe Collection Guidance - 7

Risk assessment of collection services:

- Should take place on many levels (strategic, generic, specific and dynamic)
 - The aim should be to do as much as possible before the crew gets out there (minimise the dynamic element as much as possible)
 - Key role of contract managers/route planners
 - But involve everyone – including those collecting
 - Review significant risks & eliminate at source e.g. reversing
-

Safe Collection Guidance - 8

Ultimate aim - workers to be provided with safe collection routes and clear instructions on route specific control measures

- Recording of significant findings – not reams of paper
 - How to communicate to collection crews
 - Keep it simple
 - Specific instructions should be available in cab e.g. when you should reverse, when you should deploy RAs
 - Can be in written form (simple) or other ways e.g. graphics or via GPS route planning
-

Safe Collection Guidance - 9

Enforcement:

- Initial enforcement expectation - internal guidance to inspectors SIM 03/2009/03
 - Look for evidence of risk assessment of collection activities being applied at the four levels
 - Concentrate enforcement on specific/identifiable routes
 - Ultimately use of guidance should be pragmatic and proportionate to the risks
-

Safe Collection Guidance - 10

Enforcement continued:

Concern over Appendix 1 re single v double sided collections

Not new – similar requirement in place for the last 25 years i.e. Guidance Note PM52

Must be able to “justify”



Work with local authorities - 1



Work with local authorities - 2

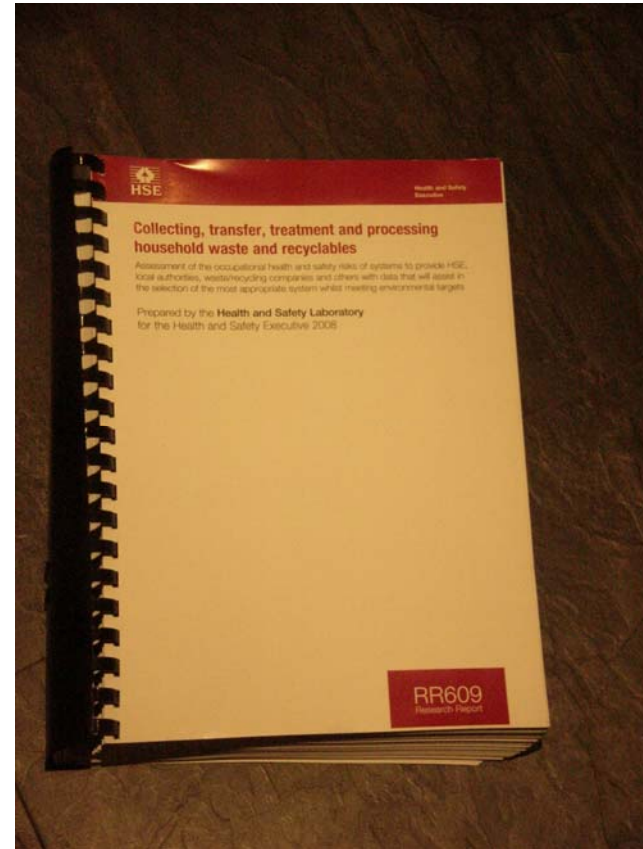
- Guidance on “Good practice principles” for management of waste and recycling services
 - with case studies
 - web based
 - Q4 of 2009/10
 - Series of regional events – Q4 of 2009/10
 - Follow up inspection programme
 - commences Q3 of 2010/11 (i.e. next October)
 - 33% of LAs each year over three years
-

Work with local authorities - 3

- Who – speakers – HSE Chair and Board, HSE, ESA, LGE
 - Who – delegates – Heads of Service, Procurement and H&S also ESA invited contractors
 - Events – DATES FOR YOUR DIARIES
 - 19 January 2010 – London - ESE and London
 - 26 January 2010 – Manchester – North West
 - 27 January 2010 – Leamington Spa – Midlands
 - 3 February 2010 – Edinburgh – Scotland
 - 9 February 2010 – Llandrindod Wells – Wales
 - 10 February 2010 – Bristol/Exeter – South West
 - 23 February 2010 – York – Yorkshire & North East
 - 25 February 2010 – London – ESE and London
-

Work with local authorities - 4

Risk comparator tool



Work with local authorities - 5

- Review of sickness absence data in the waste and recycling industry

<http://www.hse.gov.uk/research/rrpdf/rr750.pdf>

- Adoption of the WISH metrics
-

The end

Any questions?

For the “shy” ones

chantal.nicholls@hse.gsi.gov.uk



environmental
services
association



Collecting waste safely

9 November, London

10.00 – 15.15 pm